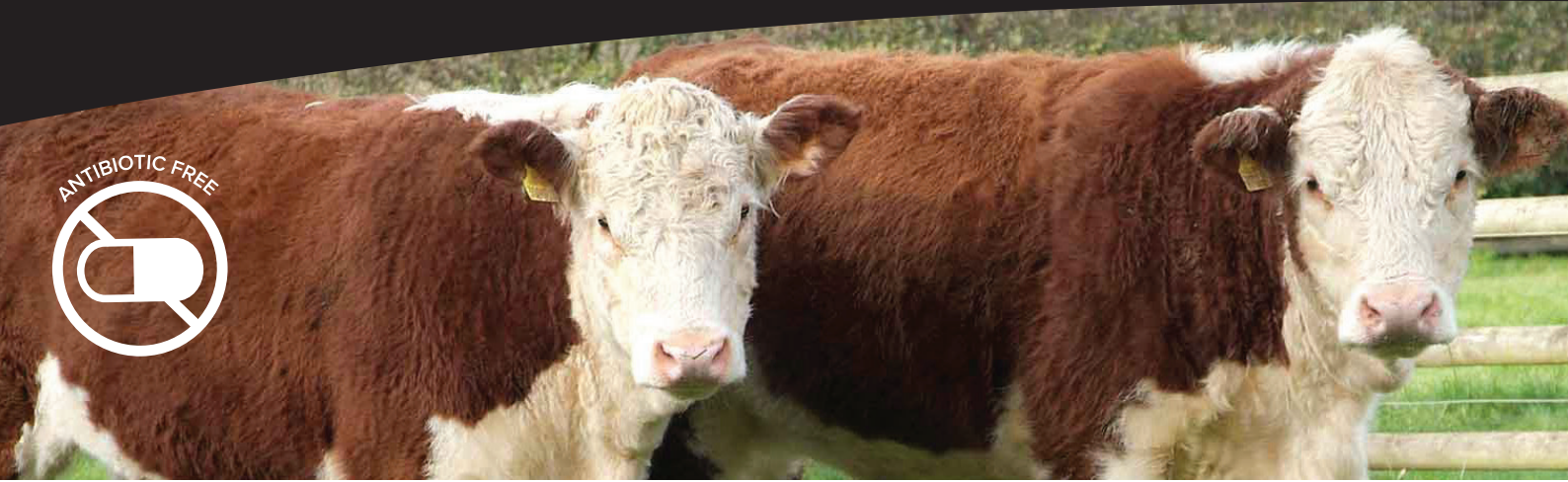


ProTect Cattle Finisher

A complete feed for beef cattle.



ProAgni ProTect™ Cattle Finisher is a full cereal grain and protein pellet. Designed to provide the full dietary requirements for use in feedlots, drought lots, supplementary feeding or weaning of beef cattle.

Why use ProTect Cattle Finisher?

- Provides balanced protein and energy nutrition for beef cattle
- Provides buffering against lactic acidosis
- Helps livestock reach genetic potential for increased production
- Meets increasing demand for antibiotic free meat

How do I use ProTect Cattle Finisher?

This complete feed pellet is designed for feeding at 1-2% of bodyweight per day, fed out in troughs or self feeders, in conjunction with fibre forage. Allow at least 20% of the total intake of the animal to consist of a quality fibre source such as cereal hay or straw.

Do not feed this pellet at 100% of diet. Fibre is required.

Induct animals carefully onto feed. Increase intake of pellets to desired level for 7-10 days to minimise risk of digestive upset.

- ✓ DROUGHT LOT
- ✓ FEEDLOT
- ✓ SUPPLEMENTARY FEEDING
- ✓ WEANING

Give special attention to controlling the introduction to excessively hungry or drought-affected animals. Ensure that access to cool, clean fresh water is always available.

ProTect Cattle Finisher contains:

- Cereal grain, digestible fibre, oilseed protein & oil.
- ProAgni® ProTect C, a highly effective nutritional supplement which provides buffering against lactic acidosis, and optimised rumen fermentation for animal performance, and contains;
 - Acid Buf, a rumen buffer, containing a pure source of bio-available minerals for rumen efficiency
 - Optiwise® a patent pending additive of organic and inorganic bio-available minerals, trace elements, vitamins, probiotic extracts, bioactives and antioxidative compounds, for maximising animal health and minimizing energy waste



FEATURES: ProAgni® ProTect C

ProTect Cattle Finisher product contains ProAgni's unique 'ProTect C' ionophore and antibiotic-free grain feeding supplement. Learn more at proagni.com/products/cattle

How to feed

Please refer to the ProAgni Induction guides for cattle (available at proagni.com) for the ProTect C Grain Feeding Supplement: 'INTENSIVE CATTLE FEEDING PROTOCOL' including the Feed Induction 8-day program for cattle > 300kg, OR the 'CALF WEANING PROTOCOL' for calves > 120kg, should be followed.

Packed in 25kg bags, 1 tonne or bulk

Ingredients

- Cereal Grain (Barley)
- Digestible Fibre (Almond Hull Meal)
- Oilseed Protein and Oil (Canola meal, Canola Oil)
- ProAgni ProTect C (5% inclusion)

Nutrient Specifications: Dry matter basis

Nutrient name	Typical analysis	Unit of measure
Protein	15	%
Energy (Ruminant ME)	12	mj/kg
Crude fibre	9.5	%
NDF	24	%
Starch	39	%

- Free from urea and hormones
- Free from Lasalocid and Monensin
- Nil withholding period, nil export slaughter intervals
- Feed only to beef cattle
- Do not feed wet, mouldy products to any animal

IMPORTANT: The information contained in the document is general in nature, intended solely for our customers and should not be relied on as specific advice in relation to your circumstances. Except as required by law, we disclaim and take no responsibility for any errors in, or omissions from, the subject matter of this document. Specification subject to change. Issued July 2019.

To purchase contact
your local ProAgni or AMBOS reseller

©ProAgni (Aust) Pty Ltd, ABN 68 627 185 960, info@proagni.com

